



# MTi50 Thermal Imager

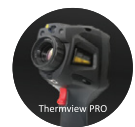
The MTi50 Thermal Imager with a resolution of 160 x 120 pix at 50Hz, built-in Laser Distance meter and Wi-Fi is ideal for predictive maintenance, equipment troubleshooting and verification. Quickly and effectively detect anomalies on drive motors, electrical panels or HVAC applications with manual focus, large bright touch screen and easy to access toolbar. The touch screen allows the user to manually add up to 3 spot or area measurements, Hot/Cold spot marker that automatically finds the hottest and coldest spots and adjustable zone alarm. It features temperature ranges from -20°C to 650°C, 32X digital zoom, HDMI video output and on-screen adjustable level and span. The hard protective carry case contains a memory card, lithium polymer battery & power supply, and USB cable.

## Features

- 160 x 120 Pixel Thermal Detector
- 19,200 points real temperature
- 50Hz Image Frequency
- Laser Distance 30m
- 3 Area and 2 Line Analysis
- 3 Manual Spots
- Hot, Cold and Centre Spot Temperature
- 3.5" TFT LCD display, Touch Screen
- Instant share & save via WiFi to PC, iOS and Android smart devices
- Colour Pallets include Iron, Rainbow, Grey, Grey Inverted, Brown, Blue/Red, Feather, Zone Alarm
- Rugged and industrial design casing
- Easy to use functions via touch screen



Function	Range
<b>Imaging and Optical Data</b>	
Field Of View	17° x 12.7°
Spatial Resolution	1.89mrad
Thermal Sensitivity	<0.05° at 30°C (86°F)/50mK
Image Frequency	50Hz
<b>Focus Mode Manual</b>	
Focus Mode	Manual Focus
Focal Length	9mm
Focal Plane Array (FPA)/Spectral Range	Uncooled Microbolometer/8-14µm
IR Resolution	160 x 120 pixels
<b>Image Presentation</b>	
Display	3.5" TFT LCD, Touch Screen
Display Resolution	640 x 480 pixels
Image Modes	IR Image, Visual Image, Pic-in-Pic, Auto Fusion
Colour Pallets	Iron, Rainbow, Grey, Grey Inverted, Brown, Blue/Red, Feather, Zone Alarm
<b>Measurements</b>	
Object Temperature Range	-20 to 150°C (-4 to 302°F) / 0 to 650°C (32 to 1202°F)
Object Temperature Accuracy	±2°C (3.6°F) or ±2% of reading
Laser Distance	0.05 to 30m (0.15 to 98ft)
Laser Distance Accuracy	Typically ±1.5mm (0.06in)
<b>Measurement Analysis</b>	
Spot	Centre Spot & 3 Manual Spots
Line	2 Line Analysis
Area	3 Line Analysis
Automatic	Auto Hot & Cold Markers
Adjustable Emissivity	0.01 to 1.0
Measurement Correction	Emissivity, Reflected Temperature, Ambient Temperature, Humidity, Infrared Compensation, Distance Compensation
<b>Storage</b>	
Storage Media	8GB Micro SD Card, 3.4GB Internal EMMC
Video Storage Mode	Standard MPEG-4
Image Storage Mode	JPEG and HIR and simultaneous visual image including measurement data
<b>Data Communication Interfaces</b>	
Interfaces	USB-Mini, HDMI
Video Out	HDMI
Wi-Fi	802.11, transfer images and real time video stream
Size	260 x 101 x 120mm
Weight	846g



**MTi50** | 160 x 120 Pixels with Wi-Fi

Contact Us  
South Africa

www.major-tech.com sales@major-tech.com

Australia

www.majortech.com.au info@majortech.com.au